

Motor Car Underframe

Figure A

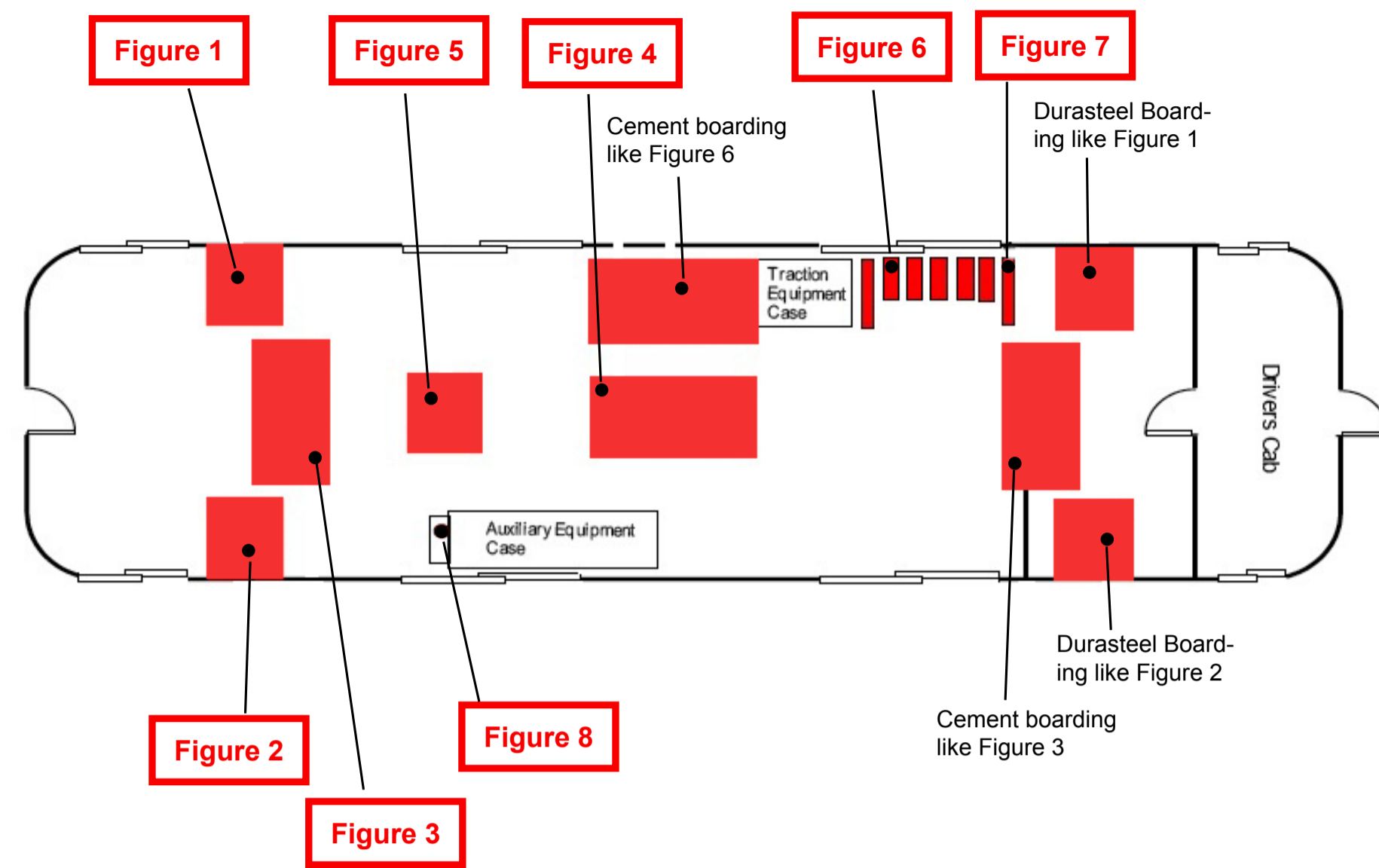


Figure 1 & 2



Motor Car 5099 panel to underframe, RHS and LHS Durasteel Panel - Chrysotile and Amosite

Figure 3 & 4



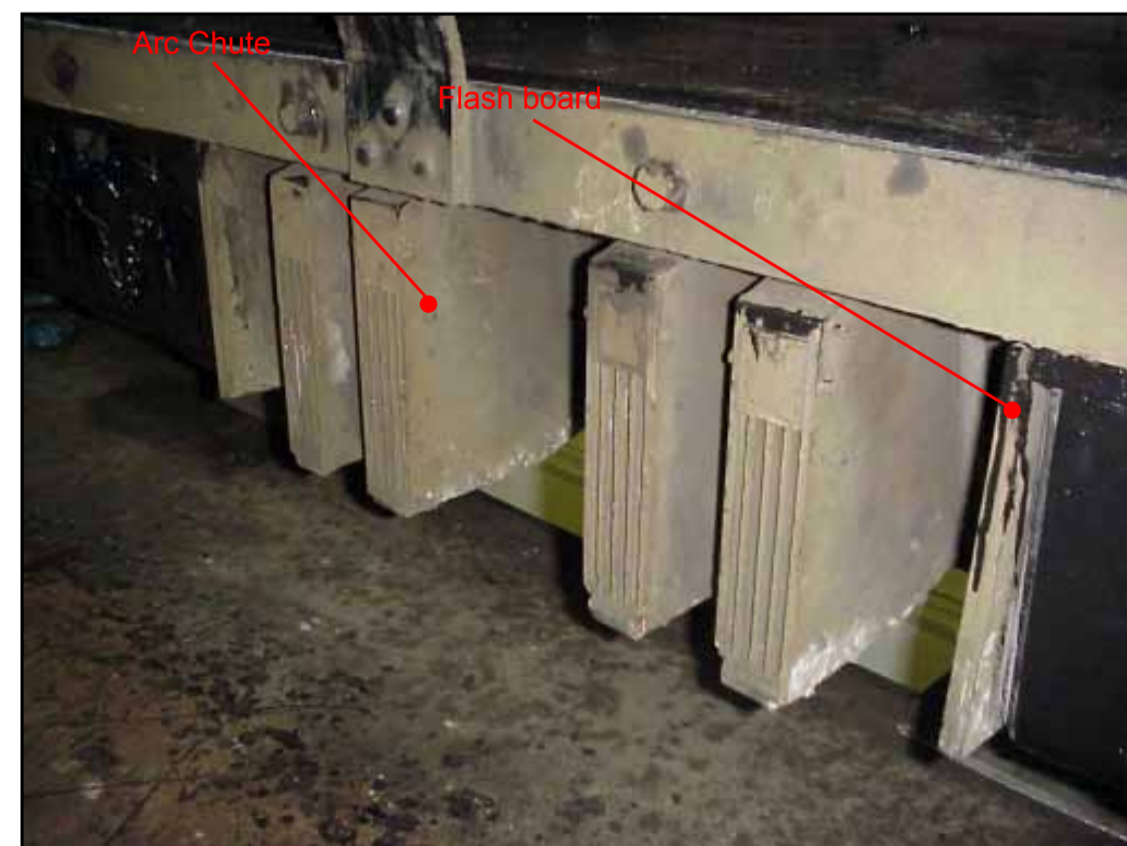
Motor Car 5099 panel to underframe, centre & RHS. Cementitious boarding

Figure 5



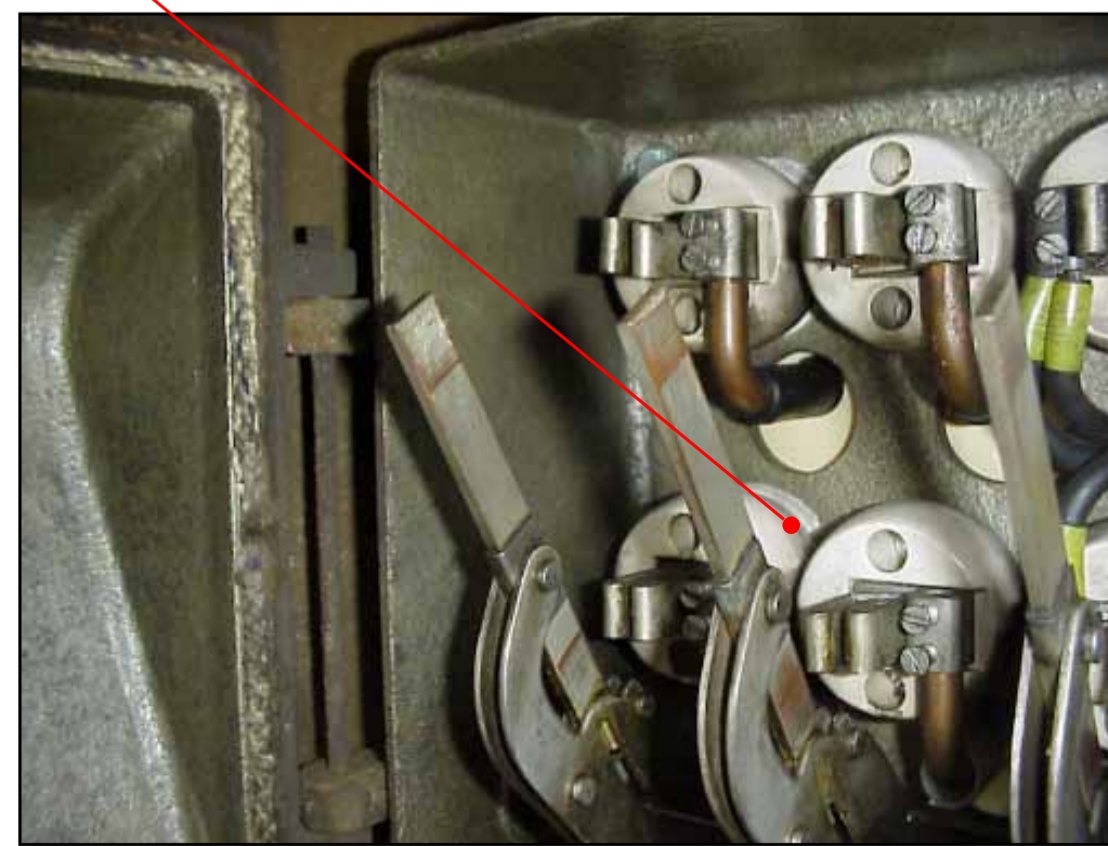
Motor Car 5099 panel to underframe, centre. Durasteel Panel - Chrysotile

Figure 6 & 7



Motor Car 5099 Traction Equipment. Cementitious Arc Chutes. Chrysotile 014184/15

Figure 8



Motor Car 5099 - Gassing switch box. Insulating paper behind switches. Chrysotile

Motor Car Saloon & Drivers Cab

Figure B

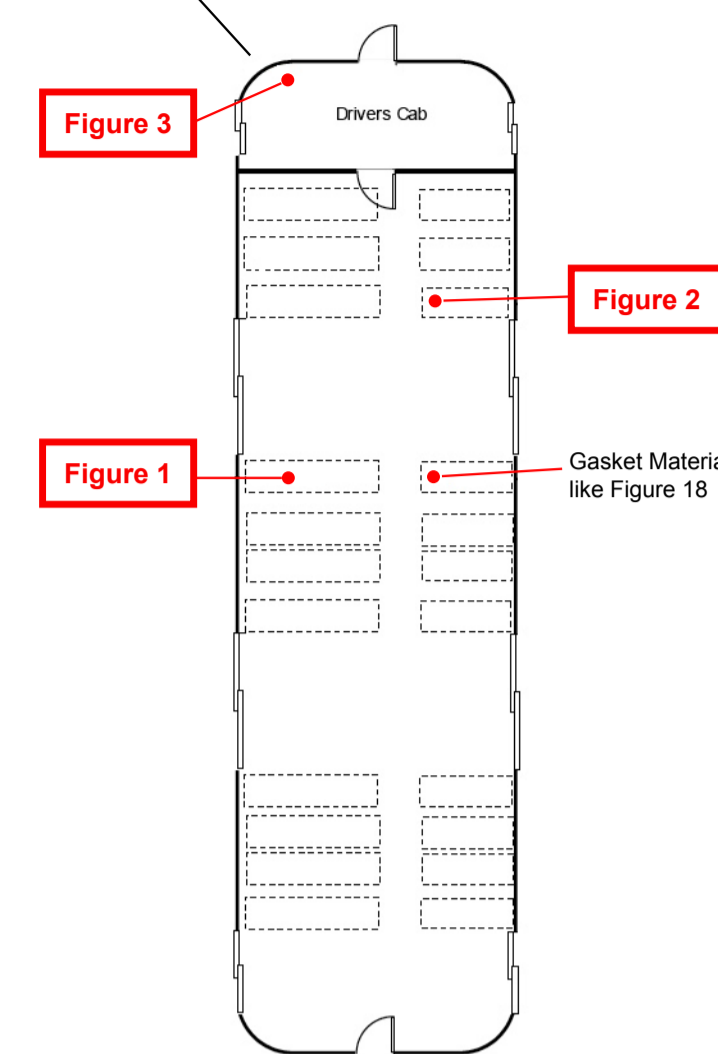
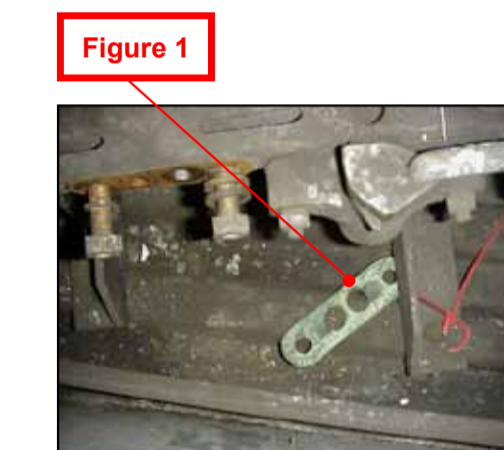
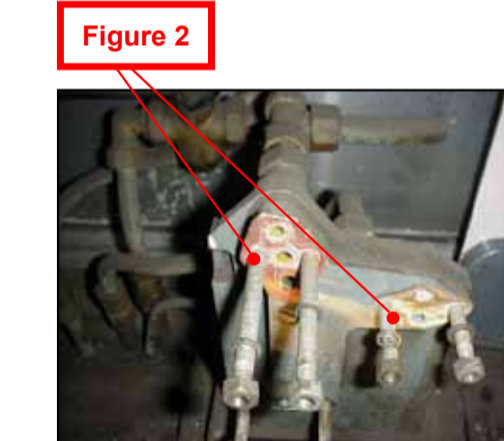


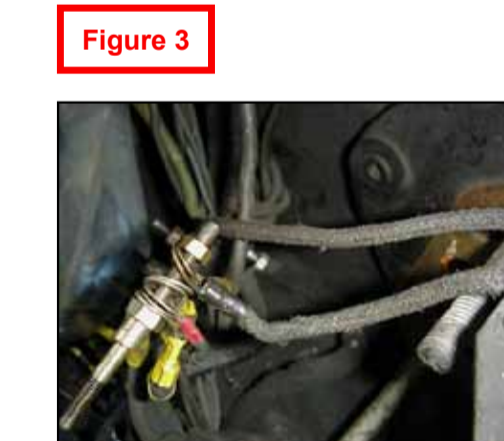
Figure B



Motor Car 5099 Saloon - Equipment in seat cavity. Gasket Material. Chrysotile



Motor Car 5099 Saloon - Door open/close valves & Coupler valve in seat cavity. Gasket Material - Chrysotile



Motor Car 5099 Cab - D8 VIC Panel. Cable insulation - Chrysotile

Trailer Car Saloon

Figure C

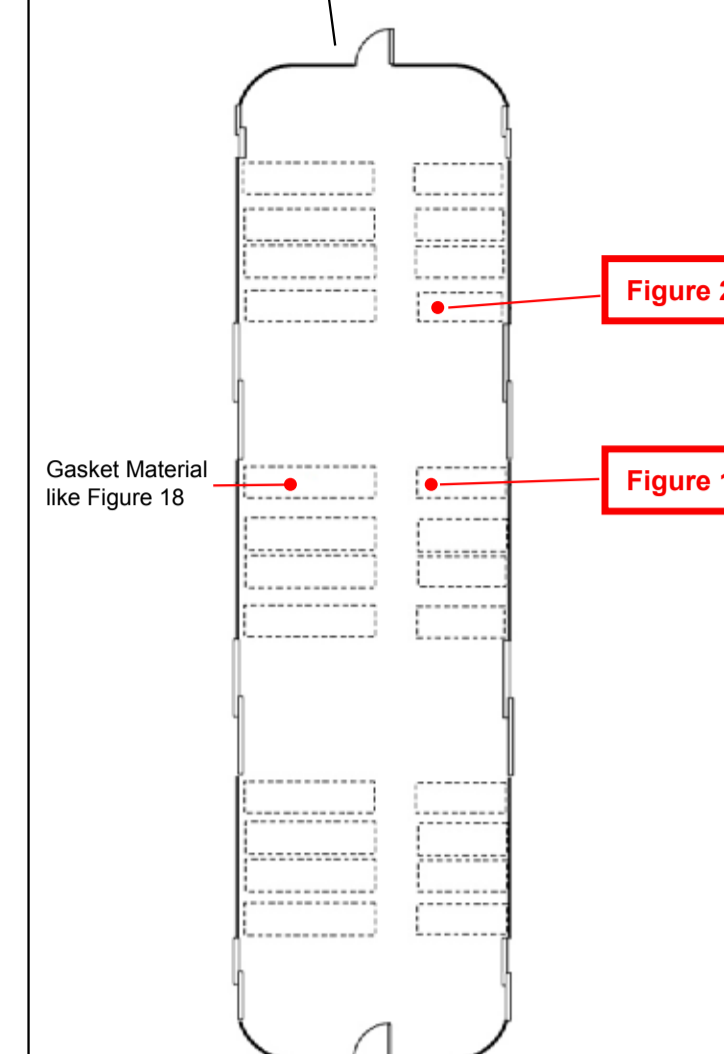
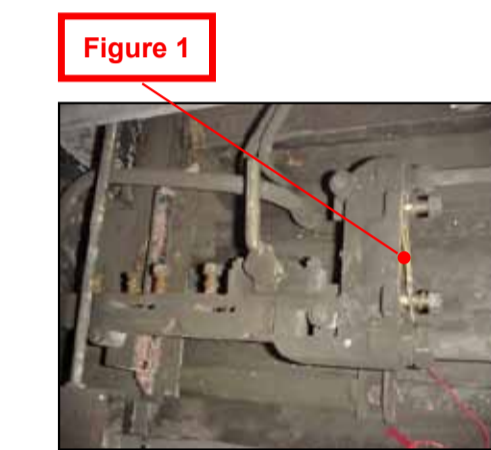
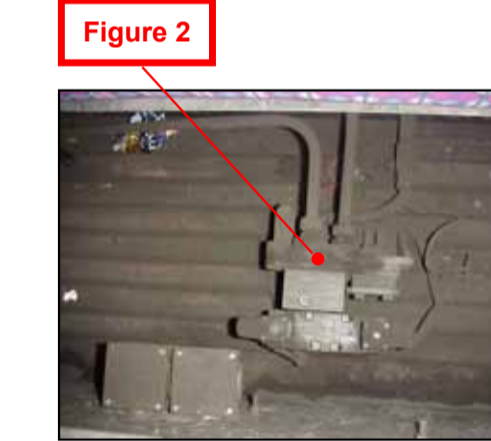


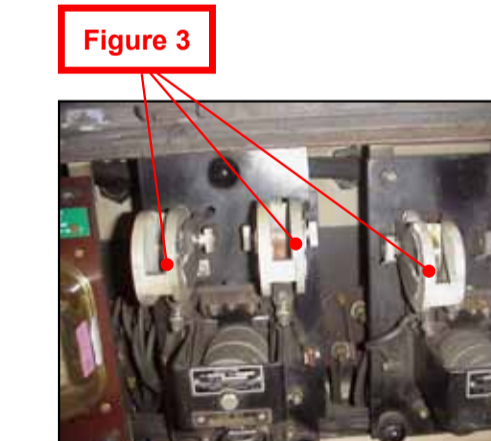
Figure C & D



Trailer Car 6099 - Equipment in seat cavity. Gasket Material - Chrysotile



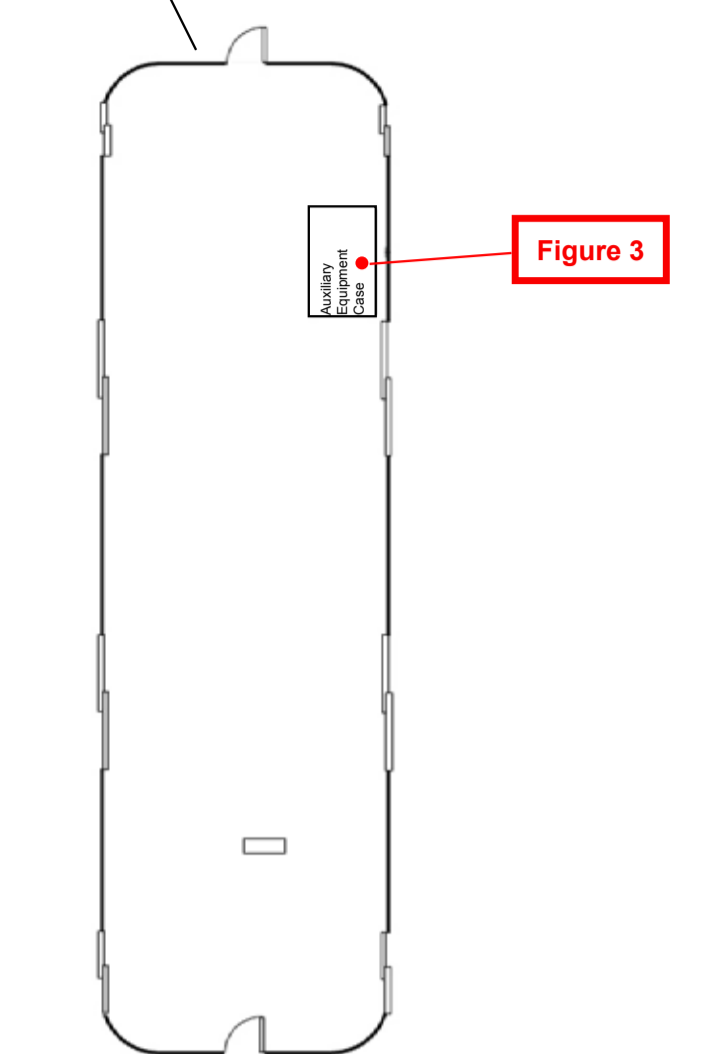
Trailer Car 6099 - Door open/close valves in seat cavity. Gasket Material. Chrysotile



Trailer Car 6099 - Auxiliary Equipment Case. Flash Boards to switches. Chrysotile

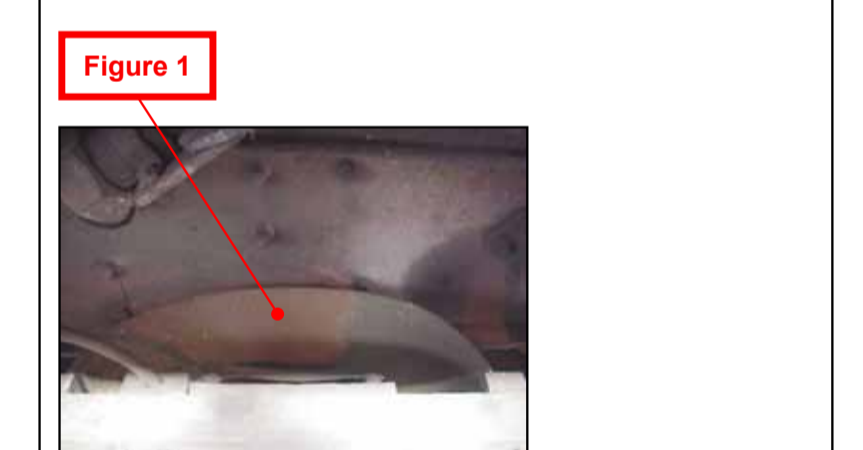
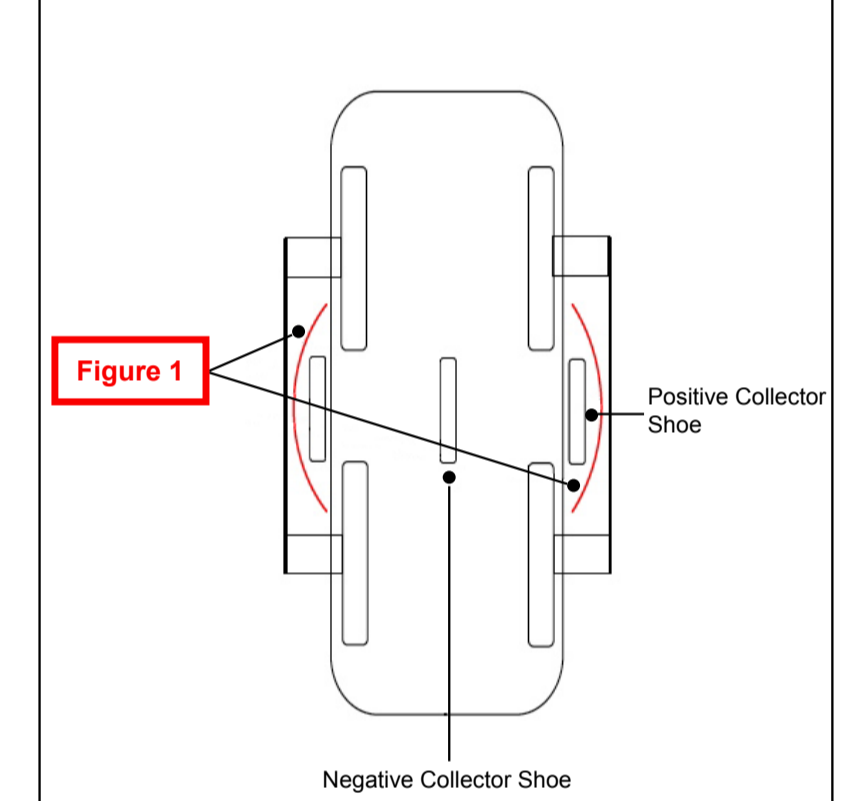
Trailer Car Underframe

Figure D



Motor Car Bogie

Figure E



Motor Car 5099 Bogie - Traction Current Equipment. Insulation Flash Board - Chrysotile

Metropolitan Rolling Stock



Location of Hazardous Materials Pictogram

Please read:

These Pictograms are representative and should not be taken to indicate that all these items will be found on every car type or every car of that type; Also items noted be may be found in similar location throughout the stock;

Niether should it be taken to represent all Hazardous Materials, as historically asbestos has been used in unusual applications throughout the LU (Tube Lines) network;

However we are confident that all known asbestos items are known, but if you believe you encounter any suspect material please pass your concerns to the Duty Depot Manager who will contact the Tube Lines Hazardous Materials Unit for confirmation;

If any items on this Pictogram are found to be damaged, please report this to the Duty Depot Manager; Who will either:

- * arrange for the damaged item to be replaced, if a safe system of works is in place
- *will inform the Tube Lines Hazardous Materials Unit, who will arrange for the necessary remedial works;

This document was produced by Tube Lines Hazardous Materials Unit on the 11th October 2011